



## Grange GR980

### USER MANUAL



#### Specifications

Dimensions mm (LxDxH)	230 x 230 x 540	Jug Capacity	2.5L
Power	230V 50Hz	Speed RPM	32,000
Motor	1680 W	Net Weight	5.8Kg

[www.rfeaustralia.com.au](http://www.rfeaustralia.com.au)

Aus: 1 300 634644

Dear Customer,

Thank you for purchasing this Grange appliance. Before using the appliance for the first time, please read this manual carefully, paying particular attention to the safety regulations outlined below.

## Safety regulations

- This appliance is intended for commercial use only and must not be used for household use.
- The appliance must only be used for the purpose for which it was intended and designed. The manufacturer is not liable for any damage caused by incorrect operation and improper use.
- Keep the appliance and electrical plug away from water and any other liquids. In the event that the appliance should fall into water, immediately remove plug from the socket and do not use until the appliance has been checked by a certified technician. Failure to follow these instructions could cause a risk to lives.
- Never attempt to open the casing of the appliance yourself.
- Do not insert any objects in the casing of the appliance.
- Do not touch the plug with wet or damp hands.
- **Danger of electric shock!** Do not attempt to repair the appliance yourself. In case of malfunctions, repairs are to be conducted by qualified personnel only.
- **Never use a damaged appliance!** Disconnect the appliance from the electrical outlet and contact the retailer if it is damaged.
- **Warning!** Do not immerse the electrical parts of the appliance in water or other liquids. Never hold the appliance under running water.
- Regularly check the power plug and cord for any damage. If the power plug or power cord is damaged, it must be replaced by a service agent or similarly qualified persons in order to avoid danger or injury.
- Make sure the cord does not come in contact with sharp or hot objects and keep it away from open fire. To pull the plug out of the socket, always pull on the plug and not on the cord.
- Ensure that the cord (or extension cord) is positioned so that it will not cause a trip hazard.
- Always keep an eye on the appliance when in use.
- **Warning!** As long as the plug is in the socket the appliance is connected to the power source.
- Turn off the appliance before pulling the plug out of the socket.
- Never carry the appliance by the cord.
- Do not use any extra devices that are not supplied along with the appliance.
- Only connect the appliance to an electrical outlet with the voltage and frequency mentioned on the appliance label.
- Connect the power plug to an easily accessible electrical outlet so that in case of emergency the appliance can be unplugged immediately. To completely switch off the appliance pull the power plug out of the electrical outlet.
- Always turn the appliance off before disconnecting the plug.

EN





Keep this manual with the appliance.  
Diese Gebrauchsanweisung bitte beim Gerät aufbewahren.  
Bewaar deze handleiding bij het apparaat.  
Zachowaj instrukcję urządzenia.  
Gardez ces instructions avec cet appareil.  
Conservate le istruzioni insieme all'apparecchio.  
Păstrați manualul de utilizare alături de aparat.  
Хранить руководство вместе с устройством.



For indoor use only.  
Nur zur Verwendung im Innenbereich.  
Alleen voor gebruik binnenshuis.  
Do użytku wewnątrz pomieszczeń.  
Pour l'usage à l'intérieur seulement.  
Destinato solo all'uso domestico.  
Doar pentru uz la interior.  
Использовать только в помещениях.



- Never use accessories other than those recommended by the manufacturer. Failure to do so could pose a safety risk to the user and could damage the appliance. Only use original parts and accessories.
- This appliance is not intended for use by persons (including children) with reduced physical, sensory or mental capabilities, or lack of experience and knowledge.
- This appliance must not be used by children under any circumstances.
- Keep the appliance and its cord out of reach of children.
- Always disconnect the appliance from the mains if it is left unattended or is not in use, and before assembly, disassembly or cleaning.
- Never leave the appliance unattended during use.

## Special Safety Regulations

- This machine is designed only for blending and mixing food in commercial use such as in the food industry and shops. (e.g. catering, restaurant, bar, etc.).
- Use the machine only as described in this manual.
- This machine should be operated and installed by specialized trained personnel in the kitchen of the food industry such as catering, restaurant, bar, etc.
- All maintenance, installation and repair works should be performed by specialized trained authorized technicians.
- Do not place the machine on a heating object (gasoline, electric, charcoal cooker, etc.) Keep the appliance away from any hot surfaces and open flames. Always operate the machine on a level, stable, clean, heat-resistant and dry surface.
- Do not use the machine near explosive or flammable materials, credit cards, magnetic discs or radios.
- Wear protective clothing, mask, or protective glasses if necessary during operation.
- This machine is not intended to be operated by means of an external timer or separate remote-control system.
- Never bypass any safety interlocks on the machine.
- **WARNING:** Keep all ventilation openings in the appliance clear of obstruction.
- **WARNING: ALWAYS** switch off the machine and unplug from electrical power supply before cleaning, maintenance or storage.
- **WARNING! ALWAYS** keep hands, long hair and clothing away from the moving parts.
- Allow at least 20 cm spacing around the appliance for ventilation purpose during use.
- Caution! Securely route the power cord if necessary in order to prevent unintentional pulling or contact with the heating surface.
- Do not put hands into the jug when the machine is in operation.
- Do not load too much ingredients in order to prevent overflow of the food products.
- **WARNING!** Do not fill above the **MAX.** mark of the jug.
- **WARNING!** Liquids to blend should be at or below room temperature. If you are going to blend warm liquids, ensure that the jug lid is correctly in place and use low speed for processing. Risk of burns and be careful.
- Do not wash the machine with water or a waterjet. Washing with water can cause leakage and increase the risk of electric shock. No parts are dishwasher safe.

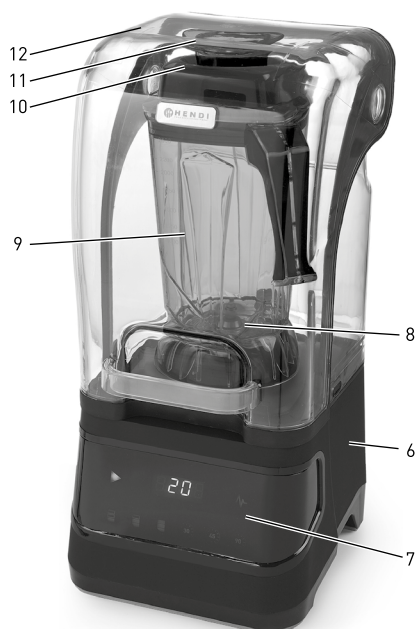
- Do not clean or store the machine unless it is completely cooled down.
- Do not move the machine while it is under operation. Unplug the machine when moving the machine and hold it at the bottom.
- Do not operate the machine without ingredients to avoid overheated.
- Ensure the machine is in STANDBY mode and unplug it after use.

### Grounding installation

This appliance is classified as protection class I appliance and must be connected to a protective ground. Grounding reduces the risk of electric shock by providing an escape wire for the electric

current. This appliance is equipped with a cord having a grounding wire with a grounding plug. The plug must be plugged into an outlet that is properly installed and grounded.

### Main parts of the machine




1. Power switch ► (ON/ STANDBY): Press to switch ON the machine; Press again to switch to STANDBY mode

2. Speed control: Select and then press to the desired speed.



3. Timer: Select and then press to the desired time (30s / 45s / 90s)

4. Pulse button : Full speed impulse movement. Press and hold to operate, release the button to stop.

5. Digital control display

6. Motor base

7. Control panel

8. Blade assembly

9. Jug

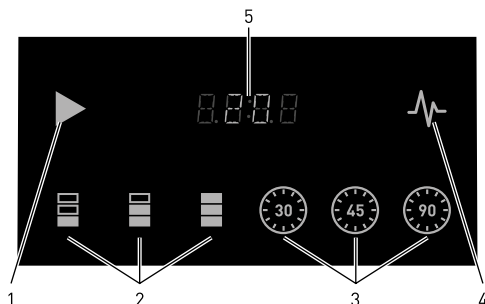
10. Jug lid

11. Cover cap

12. Protective cover

EN

### Digital control panel



---

### Special safety features

**IMPORTANT:** This machine has a specially designed safety feature: Protective cover [12].

The machine can only operate when the protective cover [10] is closed and the jug [9] is installed properly on the motor base [6].

---

### Preparations before installation

- Remove all protective packaging and wrapping.
  - Check the machine for completeness and transport damages. In case of incomplete delivery (e.g. jug lid, etc) or damage, contact supplier immediately. DO NOT use the machine. (See == > Warranty).
  - Clean the machine and the jug [9] before use (See ==> Cleaning and Maintenance).
  - Make sure the appliance is completely dry.
- 

### Installation

- Read this manual thoroughly and carefully before installation and operation.
  - Ensure the machine is placed in a dry area and that surface has sufficient strength to support the machine. Also ensure there are no obstructions nearby during operation of the machine.
  - Ensure that the electrical power supply corresponds with the rating label on the machine.
- CAUTION! Never** bypass any safety micro switch.
- 


### Transportation

- Do not move the machine while it is under operation. Unplug the machine when moving the machine.
  - Always remove the jug [9] when moving.
  - Lift only at the motor base [6] when moving.
- 

### Operation

**Note:** For safety reason, the machine can only start to operate with the jug [9] installed properly on the motor base [6] and the protective over [12] is closed properly.

- Check if the machine is at the STANDBY mode.
  - Unplug the machine and open the protective cover [12], take out the jug [9] from the motor base [6].
  - Pour all the ingredients into the jug [9] and close it with the jug lid [10] and place the cover cap [11] correctly in place.
  - Place the whole jug [9] onto the motor base [6] & close the protective cover [12].
  - Connect the power plug to a suitable electrical power supply socket and the machine is in STANDBY mode now.
  - Switch ON the machine by pressing the power switch [1] and 20 will be shown on the digital control display [5] or select a suitable speed by pressing the desired speed control button [2]: **L** / **Π** / **H** will be shown on the digital control display [5] correspondingly. Default speed setting is 20 when you switch on.
  - Select the time for operation (30s / 45s / 90s) by pressing the timer button [3]. Remaining time will be shown on the digital control display [5]. Once the set time is elapsed, the machine will stop operation and go to STANDBY mode.
  - After use, always press the power switch [1] to STANDBY mode and disconnect the plug from the electrical socket.
- Note: The digital control panel has 2 brightness in blue colour. When you press, it will light up brighter [dark blue]. Otherwise, it will remain in dimmer mode [light blue].

Speed selected		Description
Speed control button (2)	Low speed ( <b>L</b> )	For mixing liquids
	Medium ( <b>M</b> ) and high ( <b>H</b> ) speed	For mixing liquids and solid ingredients
Pulse function (4) 		For ice crushing or short, power impulse movements. Note: Use the pulse function for 1 ~ 2 seconds each time. Repeated about several times if necessary.

#### Remarks:

- For the best results when blending solid food-stuffs, only add small portions in succession, not all ingredients at the same time.
- Always start with lower speed ( **L** ). If necessary, then switch to the high speed ( **H** ) or to the "Pulse" function, so as not to jam the blade assembly (8).
- Do not use this machine to blend hard foodstuff, such as nuts.
- Do not fill liquids above the **MAX** mark of the jug (9).
- Liquids to be blend should be at or below room temperature. If you are going to blend warm liquids, ensure that the jug lid (10) is correctly in place and use low speed for processing. Risk of burns and be careful.
- Avoid long period of operation due to the loud noise that may hurt the hearing.

## Cleaning and Maintenance

**Attention:** Always unplug the appliance from the electrical power outlet and let it cool down completely before cleaning, maintenance, repair & storage.

### Cleaning

- Clean the machine and the jug (9) after each use and ensure all food residues are removed.
- DO NOT immerse the appliance or Jug in water or other liquids**
- Clean the surface with a slightly damp cloth or sponge with some mild soap solution.
- Never use abrasive sponges, detergents, steel wool or metallic utensils to clean the interior or exterior parts of the appliance.
- DO NOT wash the machine with water or water-jet. Washing with water can cause leakage and increase the risk of electric shock.
- No any parts are dishwasher safe.

EN

### Recommended cleaning procedure:

Parts	How to clean	Frequency
Base (6)	- Never immerse this part into water or other liquids. - Using a damp cloth with some detergent and water, rinse, sanitize and dry thoroughly.	Clean after each use
Jug, lid and cap	- Clean it with some water and some mild detergent. <b>DO NOT immerse</b> - Then, rinse off under flowing water. - Dry all parts before using again.	Clean after each use
Blade assembly (8)	- Warning! Risk of injury! Take great care when cleaning the blades. - Clean it with some water and some mild detergent. - Dry all parts before using again.	Clean after each use

### Storage

- Before storage, always make sure the appliance has already been disconnected from the electrical outlet and cooled down completely.
- Store the appliance in a cool, clean and dry place.



## Troubleshooting

If the appliance does not function properly, please check the below table for the solution. If you are still unable to solve the problem, please contact the supplier/service provider.

Problems	Possible causes	Possible solution
Machine does not start running	Protective cover (12) is not in properly closed position.	Check to make sure the protective cover (12) is closed properly.
	Jug (9) is not placed properly.	Check to make sure the jug set (9) properly.
	Power switch (1) is not pressed	Press the power switch (1)
Machine stops during operation	Built-in overloading device activates.	<ul style="list-style-type: none"><li>- Switch OFF the machine by pressing the switch (1) to STANDBY mode and unplug the machine.</li><li>- Leaving the machine for cooling down for about 30 minutes and then start again.</li></ul>

## Technical specification

Item no.: 230695

Operating voltage and frequency: 220- 240V~ 50/60Hz

Rated input power: 1,680W

Protection class: class I

Waterproof protection class: IP23

Maximum capacity: 2,5L

Dimension: 252x258x(H)547mm

Net weight: approx. 9.7kg

Noise level: approx. 85dB(A)

Rotation speed without loading (rpm):

- Low : 8,350 +/- 10%

- Medium: 13,560 +/- 10%

- High : 24,800 +/- 10%

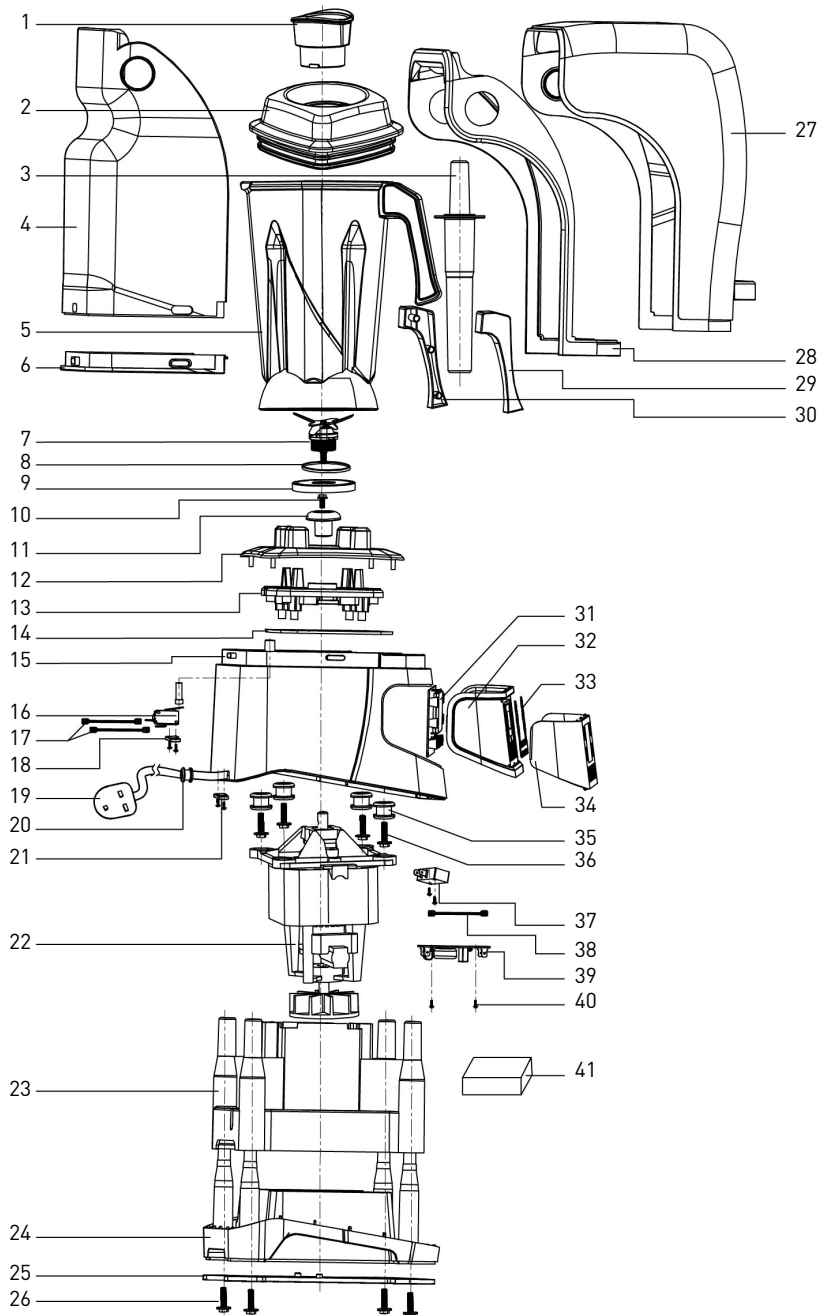
**Remark: Technical specification is subjected to change without prior notification.**

EN





# Machine exploded drawing



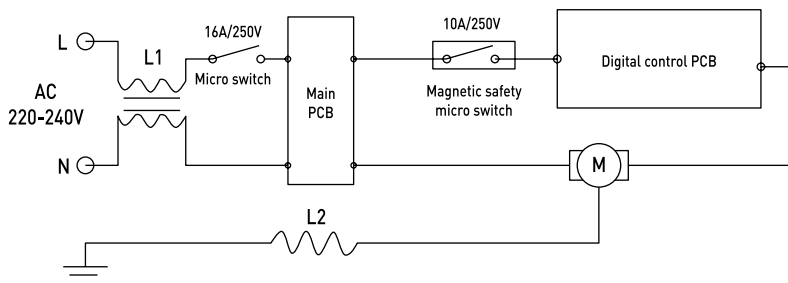
EN

## Machine part list

Part no.	Part name	Quantity	Part no.	Part name	Quantity
1	Cap cover	1	22	Motor assembly	1
2	Jug lid	1	23	Motor inner housing	1
3	Stamper	1	24	Bottom housing	1
4	Protective cover (rear)	1	25	Bottom plate	1
5	Jug set	1	26	Fixing screw	4
6	Protective cover rubber sealing (rear)	1	27	Protective cover (front)	1
7	Blade assembly	1	28	Protective cover (inner)	1
8	Seal ring of the blade assembly	1	29	Jug handle left cover	1
9	Large seal ring	1	30	Jug handle right cover	1
10	Mounting screw	1	31	Control panel PCB	1
11	Clutch	1	32	Control panel inner cover	1
12	Jug holder	1	33	Touch plate	1
13	Jug holder support	1	34	Control panel outer cover	1
14	Rubber seal cover	1	35	Anti-shock dampers	4
15	Motor outer housing	1	36	Mounting screws for anti-shock dampers	4
16	Safety micro switch assembly	1	37	Magnetic micro switch assembly	1
17	Internal wire terminal for safety micro switch	1	38	Internal wire terminal for the magnetic switch	1
18	Mounting screws for the micro switch	2	39	PCB assembly	1
19	Power plug	1	40	Screws for fixing PCB assembly	2
20	Power cord	1	41	Sound absorption cotton	1
21	Power cord clamp	1			

EN

## Circuit diagram



---

## Warranty

Any defect affecting the functionality of the appliance which becomes apparent within one year after purchase will be repaired by free repair or replacement provided the appliance has been used and maintained in accordance with the instructions and has not been abused or misused in any way. Your statutory rights are not affected. If the appliance is claimed under warranty, state where and

when it was purchased and include proof of purchase (e.g. receipt).

In line with our policy of continuous product development we reserve the right to change the product, packaging and documentation specifications without notice.

---

## Discarding & Environment

At the end of the life of the appliance, please dispose of the appliance according to the regulations and guidelines applicable at the time.

Throw packing materials like plastic and boxes in the appropriate containers.

